



## Relativity 8.x Viewer Installation Guide

The Relativity 8.x viewer will require the following two programs at each workstation:

- **Microsoft .Net Framework 4.5**
- **Microsoft Visual C++ 2005 Redistributable.**

Both programs are bundled into the **Relativity 8.x Viewer Installation Kit** and will automatically install, if they are not already available at the workstation.

**Please note that the installation process will require local administrative rights and users may need to contact their IT department for assistance with the installation.**

The **Relativity 8.x Viewer Installation Kit** is currently available on the PDS support page. The PDS support page can be accessed via the link below:

<https://pdhosting1.com/Relativity/SupportLink/Support.html>

Follow the steps below to proceed with the viewer installation:

Navigate to the support page and select the **Relativity 8.x Viewer Installation Kit** located in the Relativity Software (Relativity 8.x) section of the support page (see below):

**Relativity Software**

**General**

[Microsoft .NET Framework 4.5 Download Site](#)

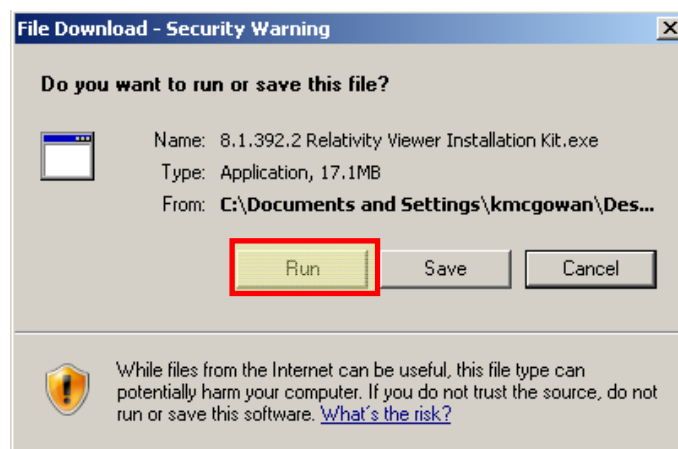
[Microsoft C++ 2005 Redistributable](#)

**Relativity 8.1**

[Relativity 8.x Webclient Installation Guide PDF](#)

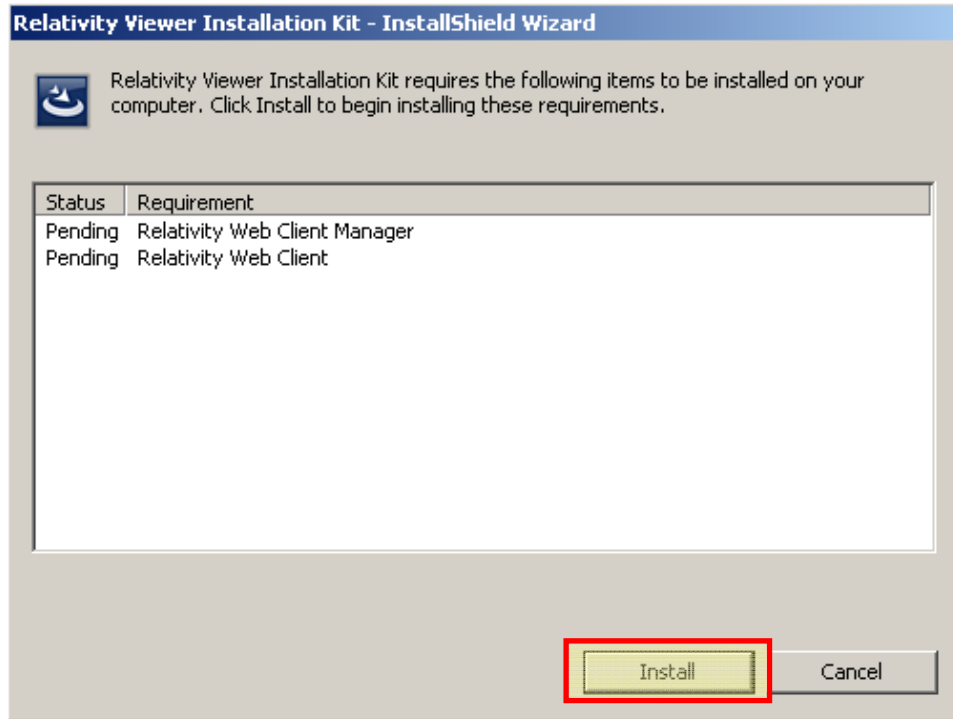
[Relativity 8.1 Viewer Installation Kit](#)

The following pop-up will appear (ensure that the pop-up blocker is turned off and that <https://pdhosting1.com/> is added as a trusted site under internet browser settings):



Select Run (if a second security warning pop-up appears asking “are sure you want to run the program,” select Run again).

The InstallShield Wizard will open (Note: the Requirements in the Install Wizard will vary depending on the local Workstation):



Select Install and wait for the installation to complete. The InstallShield Wizard window will close after the Relativity viewer has been successfully installed.

Please contact the PDS Support team at [pdssupport@planetds.com](mailto:pdssupport@planetds.com) or 914-593-6236 for assistance with the installation process.

